

# 2018 MARSHFIELD FAIR

ROUTE 3A, MARSHFIELD, MASSACHUSETTS

**FRIDAY, AUGUST 17 - SUNDAY, AUGUST 26**  
**Every Day from 12 Noon - 10 P.M.**

**Admission: \$10.00**  
**Children Ages 6 & Under Free**

Marshfield Days - Friday, August 17 & 24  
Senior Citizen Day - Tuesday, August 21  
4H & Agriculture Awareness Day - Wednesday, August 22  
**Children's Day - Thursday, August 23**

**Continuous Family Entertainment**  
**Special Features Nightly**

Midway - 4-H Livestock Shows  
Fruits, Vegetables & Flower Exhibits & Shows  
Agriculture & Conservation Displays - Giant Pumpkins  
Standard Flower Shows  
Model Railroad - Bee Exhibits  
Poultry Shows  
Rabbit Display  
Arts & Crafts

**Pay One Price Ride Tickets**  
**Discounted Advance Sale Tickets Available**  
**For more information, call 781-834-6629**  
**[www.marshfieldfair.org](http://www.marshfieldfair.org)**

# EXHIBITOR'S RULES & REGULATIONS

- In cooperation with the Massachusetts Department of Food and Agriculture, this year's fair is to be held August 17-26, 2018, inclusive at the Marshfield Fairgrounds.
- Premiums and gratuities in all departments of the Fair are open to all exhibitors.
- No discount is made for non-membership.
- Entries must be made only on designated dates and times. See list of entry dates and times in next column.
- Premium lists, programs, posters, or any information regarding the Fair will be promptly furnished upon request to Carleton E. Chandler, Secretary. Please call 781-834-6629 or visit our website at [www.marshfieldfair.org](http://www.marshfieldfair.org).
- No exhibits, games or concessions which violate the rules of the Society or the laws of the Commonwealth will be allowed on the grounds.

## SOCIETY REGULATIONS - FOR EXHIBITORS

1. All craft entries are to be made on Saturday, August 11, 10-4 and Sunday, August 12, 10-4.
2. Exhibitors are requested to use the South River Street gate, leading directly to the Agricultural Hall.
3. **Absolutely no entry will be received in any department after the day and hour designated.**
4. All articles, products, flowers, fruits and vegetables offered for premiums must have been manufactured or produced by the person in whose name they are exhibited on or after August 13, 2017.
5. Awards are made in accordance with entries, therefore exhibitors should take care to have stock and articles properly entered.
6. No premiums will be awarded unless entry and required statement have been made according to the rules of the society.
7. In all departments every exhibit should be designated by number of entry only, and no names of exhibitors are to be attached until the awards have been made.
8. Description cards will be furnished to exhibitors who are responsible for filling out and properly displaying with their animals or articles/items exhibited.
9. **Only one entry can be made by the same exhibitor in any one class.**
10. No animal shall be entitled to a premium unless it has been owned by the exhibitor for at least the required minimum amount of time as stated in the Animal General Rules.
11. The best animal will receive a premium, even though it has taken a premium at a previous fair.
12. Premiums will be payable by the treasurer within ten days after the award. If a competitor is dissatisfied with the awards of the committee, a protest shall be made to the secretary in writing, no later than the day following the awards, and the matter may be adjusted by the directors. Any questions regarding premiums paid must be filed with the Marshfield Fair office before December 1st of the year issued.
13. **The Society uses every reasonable means to protect all property on exhibit, but will not be held responsible for loss from any cause.**
14. The exhibitor agrees to be solely responsible for any loss or injury to or damage done, occasioned by, or arising from, any animals on exhibit; and to defend and to indemnify the Exposition and the Management thereof against all claims and liability in regard thereto, and upon these conditions only will entries be accepted. In view of the indemnity agreement appearing on Entry Forms and herein, exhibitors may find it advisable for their own protection to carry liability insurance, if not already covered.
15. To enter a 4-H division, the youth must be a currently enrolled 4-H member in good standing.

## EXHIBITOR'S ENTRY DATE & TIME

Agriculture & Horticulture.....	Aug 16, 2-7 pm
Canned Goods .....	Aug 16, 10-4 pm
Country Arts.....	Aug 11 & 12, 10-4 pm
Craft Shop ( <i>by Appointment</i> ).....	Aug 11 & 12, 10-4 pm
Photography.....	Aug 11 & 12, 10-4 pm
4-H Livestock.....	Register by July 13, arrive Aug. 16
Poultry Large Fowl.....	Register by July 13, arrive Aug. 16
Bantams.....	Register by July 13, arrive Aug. 22
Apiary.....	Aug 15, 4:30-7 pm
<b>Special Contests</b>	
N.E. Giant Pumpkin Contest.....	Aug 18, 9-12 pm
Dahlia Show.....	Aug 19, 12-1 pm
Fair Pleinar.....	Aug 19, 12 pm
Open Sunflower Show.....	Aug 21, 12-1 pm
Nora Delano Zinnia Contest.....	Aug. 23, 12-1 pm
Youth Giant Pumpkin Contest.....	Aug. 23, 1-3 pm
Marty Delano Ply. Cty. Tomatoe Contest.....	Aug. 23, 11-3 pm
GCFMA Standard Flower Show.....	Aug 17 & 23 pm
Baking Contest.....	Aug 18 & 25, 12-1 pm
John LaForest Bird Carving.....	Aug 27, 11-12 pm
Spinning Bee.....	Aug 26, 2 pm

## SPECIAL EVENTS

### LECTURES, WORKSHOPS & DEMONSTRATIONS

**Horticulture:** Downstairs in Agricultural Hall.

<b>Aug. 17</b>	First Standard Flower Show Today
<b>Aug. 18</b>	12-2 Butterflies Hatching
	4:00 Attracting Bees, Birds & Butterflies to Your Yard! with Betty Sanders
<b>Aug. 19</b>	12-1 Enter the Dahlia Show, judging at 1:30
	2:00 Talk on Dahlia with Donna Lane
	4:00 Tools for Smart Gardeners - M.G., Mary Arnberg
<b>Aug. 20</b>	2-4 See the Butterflies, Learn How to Attract Them
<b>Aug. 21</b>	12-1 Enter the Sunflower Show, judging at 1:30
	2:00 Q & A on Growing Sunflowers with Bill Carpenter
	4:00 Herb Window Box and Raffle
<b>Aug. 22</b>	4-6 All New Standard Flower Show
	4:00 All about Bees
<b>Aug. 23</b>	12-1 Enter Nora Delano Zinnia Contest, judging 1:30
	3-5 Kids Activity - Master Gardener, Kathi Gariepi
<b>Aug. 24</b>	2:00 Purchase a wine tasting ticket (\$1)
	4 & 5 Wine Tasting (2 seatings)
	7:00 Wine and Roses Tour of Horticulture
<b>Aug. 25</b>	2:00 Natural Gardening for Ease & Beauty - Ann McGovern
	4:00 Good Bugs, Bad Bugs & Butterflies - Kathi Gariepi
<b>Aug. 26</b>	3:00 2018 Horticulture Awards
	5:00 Plant Auction

## EXHIBITS & SHOWS

<b>Fri, August 17</b>	<b>All Day</b> GCFM Standard Flower Show
	<b>12 pm</b> Sheep Achievement
	<b>1-6 pm</b> Ox Pulling
	<b>4 pm</b> Beef Cattle Show
<b>Sat, August 18</b>	<b>12 am</b> Dog Show
	<b>1 pm</b> Baking & Cooking Judging
	<b>1 pm</b> New England Giant Pumpkin Contest
	<b>2 pm</b> Team Penning
	<b>4 pm</b> Pygmy Goat Achievement
	<b>6:30 pm</b> Dog Performance
<b>Sun, August 19</b>	<b>12 pm</b> Poultry Achievement
	<b>12 pm</b> Fair Pleinar
	<b>12 pm</b> Dahlia Show
	<b>2 pm</b> Team Penning
	<b>5 pm</b> Dairy Cattle Show
<b>Mon, August 20</b>	<b>12 pm</b> Dog Achievement
	<b>1 pm</b> Horse Achievement
	<b>2 pm</b> Meet the Dog Breeds
	<b>5 pm</b> Swine Achievement
	Small Equine Drill Team
<b>Tues, August 21</b>	<b>12 pm</b> Dog Agility
	<b>12 pm</b> Dairy Goat Show
	<b>2 pm</b> Open Sunflower Show
	<b>3 pm</b> Pygmy Goat Show
	<b>5 pm</b> Dairy Goat Achievement
<b>Wed, August 22</b>	<b>All Day</b> GCFMA Standard Flower Show
	<b>All Day</b> 4-H & Youth Activities
	<b>2 -7 pm</b> Horse Pulling
<b>Thu, August 23</b>	<b>12 pm</b> Rabbit Achievement
	<b>12 pm</b> Lego Contest
	<b>12 pm</b> Nora Delano Zinnia Contest
	<b>1 pm</b> Youth Giant Pumpkin
	<b>2 pm</b> Rabbit Show
	<b>4 pm</b> Dairy Cattle Achievement
<b>Fri, August 24</b>	<b>11 am</b> Horse Show
	<b>12 pm</b> Sheep Show
	<b>2 pm</b> Swine Show
	<b>7 pm</b> 4-H Benefit Auction
<b>Sat, August 25</b>	<b>11 am</b> 4-H Sunflower Contest
	<b>12 pm</b> Dog Show
	<b>12 pm</b> Bird Carving Contest
	<b>12 pm</b> Versatility on Horseback
	<b>1 pm</b> Baking & Cooking Judging
	<b>4 pm</b> Beef Cattle Achievement
	<b>TBA</b> Over The Hill Class
<b>Sun, August 26</b>	<b>12-6 pm</b> Antique Truck & Tractor Show
	<b>12 pm</b> 4-H Quiz Bowl
	<b>1 - 3 pm</b> Pony Pulling
	<b>2 pm</b> Spinning Bee
	<b>3 pm</b> Horticulture awards
	<b>4 pm</b> 4-H Fair Awards
	<b>5 pm</b> Plant Auction - Horticulture

# DEPARTMENT 117 GARDENING/FLOWERS AND PLANTS

**ENTRY:** Thursday, August 16, 2 p.m. - 7 p.m.

**REMOVAL:** Monday, August 27, 8 a.m. - 4 p.m.

Tuesday, August 28, 2 p.m. - 6 p.m.

**Please make arrangements in advance if you cannot come at these times.**

**LOCATION:** *Entered and displayed inside/outside bottom floor of Agricultural Hall*

*Adult and junior entries will be judged separately unless noted.*

## CONDITIONS OF ENTRY:

1. All entries must be grown, selected and arranged by exhibitor except wild flowers and flowers in arrangements and unless otherwise stated.
2. Exhibitors are requested to restore and freshen exhibits.
3. The committee reserves the right to reject any entry. Prizes will be awarded at the discretion of the judges.

4. Separate classes for juniors and adults unless otherwise noted. Check the appropriate class on entry form.
5. **Do not use an expensive container.** The Fair is not responsible for loss of items. Containers will be provided for the Garden Flowers category C1 - C24 only.
6. Potted plants must have been owned by the exhibitor for six weeks prior to the Fair.
7. Collect blooms in their prime. Do not include buds, seed pods, artificial material or any evidence of insects, disease or spray injury. Prior to entry, place plant material in a cool place, out of drafts in deep water for a few hours.
8. Water conditioners may be used.
9. Horticulture will present two awards, each with a \$10 prize: *Excellence in Horticulture* - 1 adult, 1 junior, chosen by the judge on 8/18  
*Popular Choice* - 1 adult, 1 junior, voted on by fairgoers.

## GARDEN FLOWERS

**For C1 - C 24: Enter 5 blooms unless otherwise noted  
Containers provided for these entries only.**

- |     |                                   |
|-----|-----------------------------------|
| C1  | Asters                            |
| C2  | Cosmos                            |
| C3  | Calendulas                        |
| C5  | Dahlia (1 giant bloom)            |
| C7  | Dahlias                           |
| C8  | Echinacea (cone flowers)          |
| C9  | Geranium (3 blooms)               |
| C10 | Gladioli (3 best spikes)          |
| C11 | Hydrangea (1 large bloom)         |
| C12 | Hydrangea (3 blooms)              |
| C13 | Marigold, large                   |
| C14 | Marigold, small                   |
| C15 | Nasturtium                        |
| C16 | Petunias                          |
| C17 | Roses, must be grown by exhibitor |
| C18 | Salvia                            |
| C19 | Sunflowers, 1 flower head         |
| C20 | Snapdragons                       |
| C21 | Zinnias                           |
| C24 | All other                         |

*Enjoy all our Horticulture Exhibits and tour the Standard Flower Show at our **Wine & Roses Celebration, Friday night, August 24, from 7 - 9 pm.** Purchase a glass of our featured wine and have free hors d'oeuvres.*

## DAHLIA SHOW

**Entry :** Sunday, August 19, 12 - 1 pm

Judging - 2pm

**PRIZES: 1st-\$15.00 2nd-\$10.00 3rd-\$5.00**

- |      |   |
|------|---|
| A117 | Best 5 dahlias, mixed color                     |
| A118 | Best 5 dahlias, same color                      |
| A119 | Best giant or large bloom; <u>variety named</u> |

## OPEN SUNFLOWER SHOW

**Entry :** Tuesday, August 21, 12 - 1 pm, judged by 2 pm

**PRIZES: 1st-\$15.00 2nd-\$10.00 3rd-\$5.00**

- |      |   |
|------|---|
| A124 | Best 3 flower heads, no buds                          |
| A125 | Best 1 flower head, no buds                           |
| A126 | Best single large flower head, no buds, variety named |

## ZINNIA CONTEST

**Entry:** *Thursday, August 23, 12 p.m. - 1 p.m. Judged at 2 pm*

**PRIZES: 1st-\$15.00 2nd-\$10.00 3rd-\$5.00**

### Zinnia Contest

- |     |      |                                   |
|-----|------|-----------------------------------|
| 117 | A130 | 5 Blooms, Zinnia, single flowered |
| 117 | A131 | 5 Blooms, Zinnia, cactus flowered |
| 117 | A132 | 5 Blooms, Zinnia, dahlia flowered |

This year's **Nora Delano Award**, ribbon and **\$50** will go to the **Best in Show** of our **New Zinnia contest!**

# GARDENING/HORTICULTURE EXHIBITS

## DEPARTMENT 111 HORTICULTURE CONTESTS

**ENTRY:** Thursday, August 16, 9 am - 7 pm  
(or in advance by prior arrangement)

### CONDITIONS OF ENTRY:

1. Mail entries to: Roni Lahage, Marshfield Fair, Box 5, Marshfield, MA 02050.
2. Entries are limited & will be accepted in order of receipt.
3. Space provided in the bottom floor of Agi Hall or outside.
4. No names will appear on the exhibit until after judging. Entry cards will be supplied.
5. The exhibits are inspected daily and need to be kept fresh and clean by the exhibitor.

### *Adult Entries Unless Noted*

**A350 Amateur Garden Exhibits (space for 4 entries only)**  
**PRIZES: \$200, \$150, \$125, \$100**

Individuals, garden clubs, civic groups, etc.  
5' x 8' frame on floor, mulch provided. This year's theme is **Thru The Garden Gate**

**A351 Large Conservation Exhibit**  
**PRIZES: \$100, \$80, \$60, \$40**

Large space, reserve in advance.  
Judged on conservation theme.  
Open to individuals, scouts, schools.

**A353 Junior Educational Exhibit**  
**PRIZES: \$50, \$40, \$30, \$20**

Booth Space: 30" w x 30" h x 20" d - Limited Space

**A354 Decorated Door Contest - Adults**  
**PRIZES: \$25, \$20, \$15, \$10, \$5**

1. 1 door per contestant (doors available).
2. You can bring your own door or use one supplied.
3. Decor needs to be waterproof, may be outside

**A355 Decorated Door Contest - Juniors**  
**PRIZES: \$25, \$20, \$15, \$10, \$5**

see rules for A354 above

**A356 Decorated Garden Hats or Caps! (\$8, \$7, \$6)**

Enter your favorite garden hat/cap, realistic or whimsical! Adult and junior judged separately.

**MASTER GARDENERS Q & A**  
**Available everyday from noon - 6 p.m.**  
Downstairs in Agricultural Hall.

## Creative Horticultural Displays

### CONDITIONS OF ENTRY:


1. For display, decoration, and educational purposes.
2. Exhibitors are eligible for ribbons and prize money.
3. Fresh, dried or rooted plants & accessories allowed.
4. Some maintenance (watering) will be provided.
5. Judged on conforming to theme.
6. Pre-registration is encouraged.


### *Adult Entries Unless Noted*

**PRIZES: \$100, \$75, \$50, \$25 Unless otherwise stated**

**A360 Multiple Pots Container Garden**   
**Theme: Backyard BBQ - Using at least 1 grill**  
placed within a 4' x 4' frame on the floor,  
5 pot limit, 4 entries only

**A361 The Front Porch**  
**PRIZES: \$150, \$100**  
A large vignette staged in a booth 6' w x 6' d x 4' h,  
2 entries only

**A362 Mantel**   
**Theme: A Farmers' Market**  
Can us hard skinned veggies & fruit only,  
mantel provided, attached to wall,  
40" l x 8" d, 4 entries only

**A363 Lunch Box Challenge**   
**PRIZES: \$50, \$40, \$30, \$20**  
Plant a lunch box with herbs, veggies, flowers or any  
combination of plants. Use a water proof liner or base

**A364 Botanical Photography** - by exhibitor, must be  
framed or matted. 1 entry per person. Adult and juniors  
judged separately. **PRIZES: \$15, \$10, \$5, \$2**

**A365 "Found Art" Wall Ornament Using a Garden Tool**  
**PRIZES: \$15, \$12, \$10, \$8**  
No larger than 2' x 3', 4 entries only, wall space allocated.  
Must include some plant material. Maybe mounted  
outside! Adult and juniors judged separately.

Join us for our garden lectures and craft  
demonstrations daily. See complete list under  
Special Events on page 6.

# DEPARTMENT 117 GARDENING/FLOWERS AND PLANTS

PRIZES: 1st-\$8.00 2nd-\$7.00 3rd-\$6.00 Unless otherwise noted

## FLOWER ARRANGEMENTS

- A13 Living room flower arrangement, foliage permitted
- A14 Pastel flowers with foliage in pastel container
- A15 Arrangement in a tea pot or tea cup
- A16 Shades of yellow & orange, foliage permitted in an orange container
- A17 Arrangement in pocketbook - Use waterproof insert
- A18 Arrangement in a blue & white container
- A19 Arrangement in an "animal" container
- A20 Arrangement in a watering can
- A21 Arrangement - creative, in an unusual container
- A22 **Grandparent & grandchild** arrangement flowers, wildflowers, herbs and/or foliage. Must be in/or using a toy. *NO Separate Junior Entry*
- A24 All foliage arrangement
- A25 Contemporary arrangement in metal container
- A28 Arrangement in a recycled object
- A29 Seaside arrangement using beach material

## WREATHS

- A34 Dried flower (No plastic or silk flowers)
- A35 Grapevine
- A36 Pine cone & pods
- A37 Straw
- A38 Living plant material

## DRIED ARRANGEMENTS

- A40 Dried door decoration displayed on a small door (provided)
- A41 Dried flowers in a decorative container
- A42 Dried arrangement in a basket
- A43 Other

## OUTDOOR CONTAINERS

*Containers must have adequate drainage.*

**PRIZES: \$10.00, \$8.00, \$6.00**

- G1 Outdoor flowers, med. container-2 gal or less
- G2 Outdoor flowers in container over 2 gallons.
- G3 Window box, judged on creativity
- G4 Hanging outdoor plant
- G5 Fairy garden scene in a container - under 18"
- G5A Fairy garden scene in a container - over 18"
- G6 Old chair as a planter
- G7 Most unusual garden container under 2 gals.
- G8 Most unusual garden container over 2 gals.
- G9 Vertical gardening (Try this new category!)
- G10 Old boot or shoe as a planter
- G11 Bird house planter



## INDOOR PLANTS

- E1 African violet
- E2 Begonia
- E4 Cacti
- E5 Fern
- E7 Flowering plant in a pot, labeled
- E8 Foliage plant in a pot, labeled
- E11 Hanging plant in a pot, labeled
- E12 Ivy
- E13 Orchid
- E14 Succulent
- E15 Topiary
- E16 All others

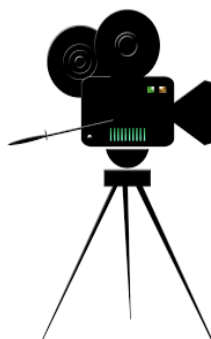
## COLLECTIONS

- F1 Garden flowers in a vase - accompanied with names
- F2 Collection of named herbs in water
- F3 Collection of named herbs in pots
- F4 Collection of fragrant flowers in water
- F5 Collection of 5 "favorite things" with flowers and/or foliage inside (ex. vases, bottles, tins etc)
- F6 Collection of 5 different Hosta leaves
- F8 Collection of 3 different Coleus in pots
- F9 Wild flowers in a vase, named
- F10 Collection of weeds (5)

## NGC/GCFM

## STANDARD FLOWER SHOW

# Lights, Camera, Action



The 2018 Standard Flower Show takes on an exciting look as new National Garden Club rules apply. There are 2 entry days: **Friday 8/17 and Wednesday 8/22** with the addition of a horticulture component. The new horticulture categories are annuals and woody perennials. You need to be a member of an NGC/GCFM Garden Club to participate. Veteran designers as well as enthusiastic novices will wow fairgoers with their interpretation of

*The Movies - Blockbusters and Classics.*

**For more information contact Roni Lahage, Marshfield Fair, Box 5, Marshfield, MA 02050.**

**DEPARTMENT 120  
JUNIOR CONSERVATION**

**PRIZES: \$8.00, \$7.00, \$6.00**

**All collections must be SECURELY mounted with names.**

- A150 Collection of at least 5 pressed flowers or wild flowers
- A151 Collection of at least 5 insects
- A152 Collection of at least 5 leaf prints
- A155 Collection of 5 shells
- A159 Collection of feathers
- A160 All other

**DEPARTMENT 117  
GARDENING, FLOWERS, PLANTS**

**JUST FOR KIDS**

**Junior Gardeners only (age 18 & under)**

**Prizes: \$10, \$8, \$6**

- A170 Favorite wild flowers
- A171 Plant a lunch box
- A172 Plant your favorite toy

**GARDENING/HORTICULTURE ENTRY FORM**

Exhibitor # \_\_\_\_\_

To save time when entering (but not required), you can mail your entry form in advance to:  
Roni Lahage, Marshfield Fair, Box 5, Marshfield, MA 02050

Your exhibit cards will then be filled out and you may add or delete entries when you arrive.

Name \_\_\_\_\_ Email \_\_\_\_\_

Street \_\_\_\_\_ Town \_\_\_\_\_

State \_\_\_\_\_ Zip \_\_\_\_\_ Phone \_\_\_\_\_

Check Group: Adult  Junior through age 18

	Dept	Class	Description
	117	C13	Mar i gol d, l ar ge
1			
2			
3			
4			
5			
6			
7			
8			
9			
10			

Please use this receipt to retrieve your entries: Monday 8/27 8-4 pm & Tuesday 8/28 2-6 pm.

Exhibitor # \_\_\_\_\_ Name \_\_\_\_\_ Total Items \_\_\_\_\_ Recv'd by \_\_\_\_\_

Classes Entered \_\_\_\_\_

# NEW CONTESTS

## GARDENING/HORTICULTURE

- 111 A363 **Lunch Box Challenge**  
**PRIZES: \$50, \$40, \$30, \$20**  
Plant a lunch box with herbs, veggies, flowers or any combination of plants.  
Use a water proof liner or base
- 117 G11 **Outdoor Containers - Bird House Planter**  
**PRIZES: \$10.00, \$8.00, \$6.00**



## AGRICULTURE

**ENTRY:** Thursday, August 16, 2 - 7 pm  
**REMOVAL :** Monday, August 27, 8 - 4 pm & Tuesday, August 28, 2 - 6 pm  
**LOCATION:** *Under the Grandstand Unless Otherwise Noted*

- 199 A200 **Still Life Imitates Art!**  
Bring a photograph of your favorite still life of fruits or vegetables and re-create it here in life!  
No cut or carved fruits or vegetables, no alcoholic beverages (you may imitate liquid using colored water).  
**Contest entry date - Sunday, August 18 from 12 - 2. Judging later that day.**  
A People's Choice vote will be taken and counted on Saturday, August 25.  
**Prizes:** \$25.00, \$15.00, \$10.00 **People's Choice:** \$25.00
- 199 A346 **Homesteaders Display- Vegetables and flowers attractively arranged on a 4'x4' slanted tabletop**  
with proper material to make an attractive display. Extra consideration given to a display  
demonstrating the exchange in a barter system between farm and a neighbor or for recycled, repurposed  
materials used in the growing, harvesting or housing of your product or animals. Photos may be displayed  
on a 4'x4' back board. Please notify us if you will need a back board. Space is limited.  
**Prizes: \$30, \$25, \$20, \$15, \$10**

### **Plymouth County Tomato Contest in honor of C.M "Marty" Delano**

**Entry:** Thursday, August 23, 11-3 pm **Judging:** 5 pm

**Prizes:** 1st - \$25.00 & ribbon, 2nd & 3rd ribbon only

Enter 5 tomatoes in any of these categories: Heirloom, Cherry, Plum or Roma and Beefsteak



## PHOTOGRAPHY

Dept. 124

F130 Photo of your **Favorite Holiday**

F131 Photo that has one **Predominate Color**

**2018 Massachusetts Agricultural Fair Association State Photography Competition**

Chosen from the top winner in all agricultural entries